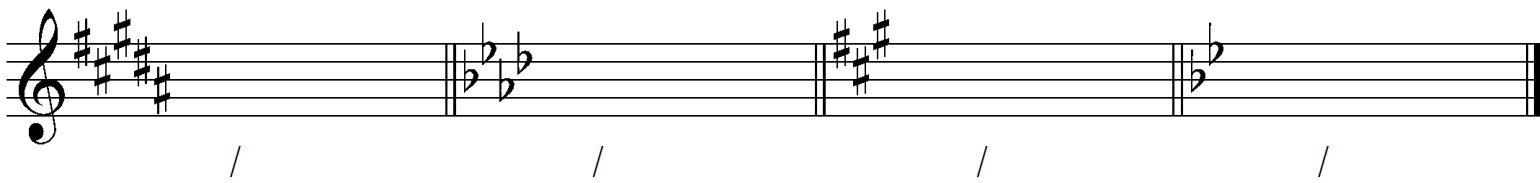


PONOVIMO

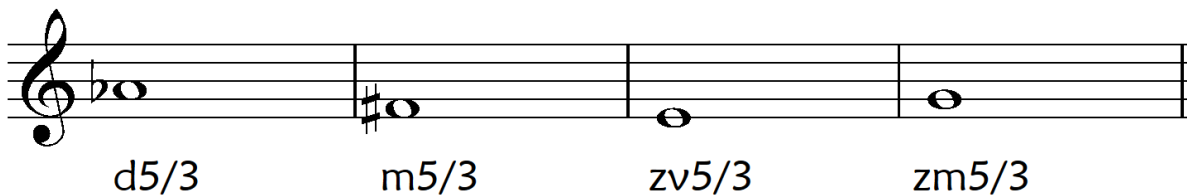
1. Po predznakih ugotovi durovo in vzporedno molovo lestvico.



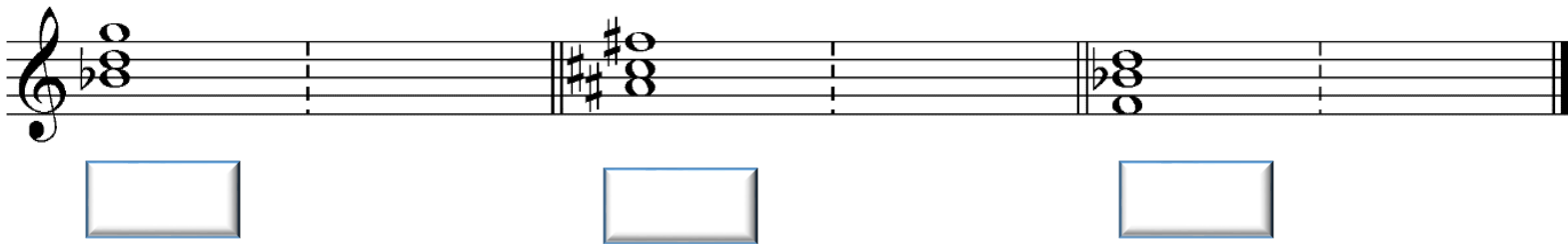
2. Zapiši intervale.



3. Reši kvintakorde.



4. Postavi obrnitev kvintakorda v osnovno obliko in jo poimenuj.



A musical staff in treble clef with a key signature of one flat (Bb). It contains three chords: a triad of G4, Bb4, and D5; a triad of C5, E5, and G5; and a triad of F4, Ab4, and C5. Below each chord is an empty rectangular box for labeling.

5. Ugotovi molovo lestvico ter njeno obliko:



A musical staff in treble clef with a key signature of one flat (Bb). It shows a scale of notes: Bb4, C5, D5, E5, F5, G5, Ab5, and Bb5. The notes are connected by a line, and there are blue circles above the first two notes.

Zagotovo lahko svoje znanje utrjuješ še na več načinov: reši manjkajoče naloge v MG 5, preizkusi se v nalogah na strani 59, reši Domače naloge,...

Naslednji teden sledi preverjanje znanja!

Lp. Alenka Mori

