

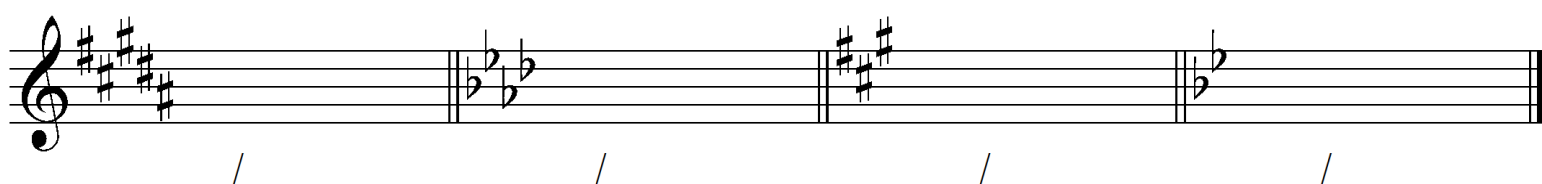
NAVODILO ZA DELO NA DALJAVO – 5. RAZRED NGL, 8. TEDEN

GLASBENA ŠOLA RAVNE NA KOROŠKEM

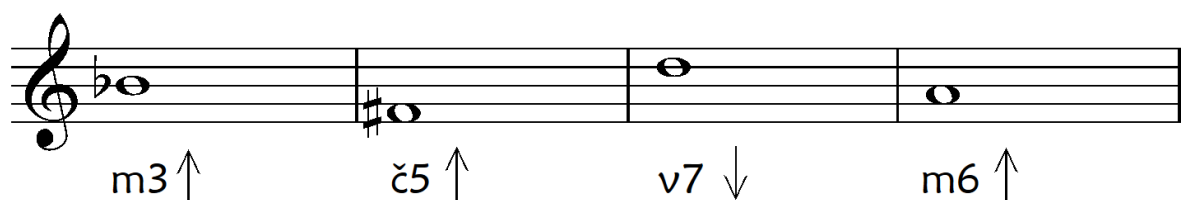
DATUM: 11. 5. 2020

PONOVIMO

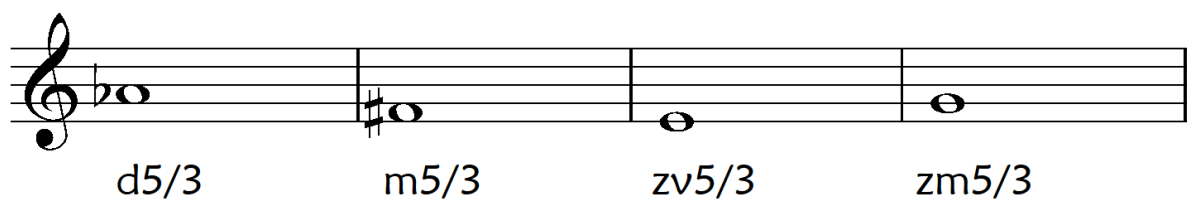
1. Po predznakih ugotovi durovo in vzporedno molovo lestvico.



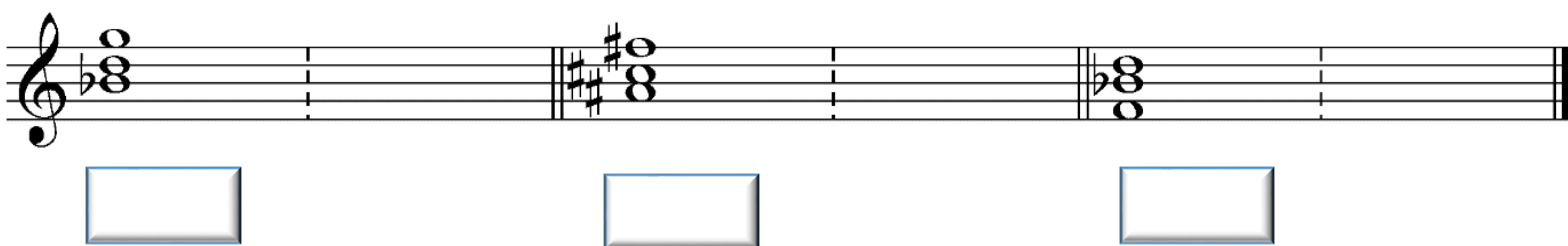
2. Zapiši intervale.



3. Reši kvintakorde.

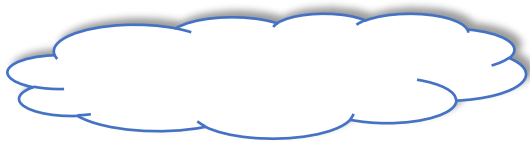


4. Postavi obrnitev kvintakorda v osnovno obliko in jo poimenuj.



A musical staff in treble clef with a key signature of one flat (Bb). It contains three chords: a triad of G4, Bb4, and D5; a triad of C5, Eb5, and G5; and a triad of F4, Ab4, and C5. Below the staff are three empty rectangular boxes for labeling the chords.

5. Ugotovi molovo lestvico ter njeno obliko:



A musical staff in treble clef with a key signature of one flat (Bb). It shows a scale starting on G4: G4, A4, Bb4, C5, D5, Eb5, F5. The notes are marked with blue circles.

REŠENE NALOGE MI POŠLI V PREGLED NA MOJ E-MAIL
ela.skarlovnik@gmail.com

ŽELIM TI USPEŠNO DELO IN TE LEPO
POZDRAVLJAM.
UČITELJICA ELA SKARLOVNIK

