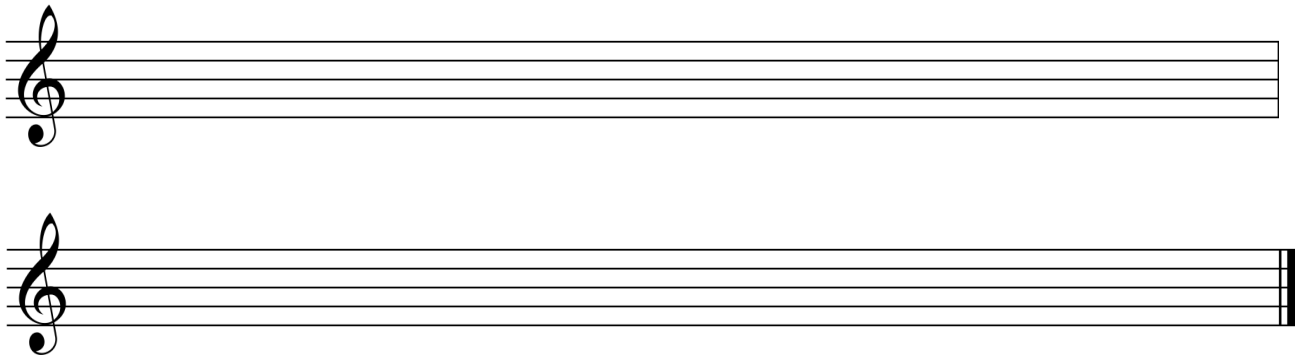


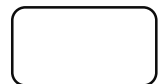
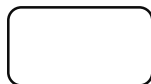
Navodila za delo od doma- NGL 6- 13.5.2020, odd. Dravograd

## PONOVIMO

1. Na tonu **es1** napiši kromatično lestvico navzgor in navzdol.



2. Zapiši molovo lestvico.



3. Reši akorde.



4. Reši intervale.



A musical staff in G major (one sharp) with a treble clef. It contains five intervals, each represented by a whole note on a specific line or space. Below the staff, arrows indicate the direction of the interval: up for 'zv4', 'č5', and 'v7'; down for 'm3' and 'm6'.

5. V melodični vaji označi in poimenuj D7 in njegove obrnitve.



A melodic exercise in G major (one sharp) and 4/4 time. The melody consists of eighth and quarter notes. The D7 chord and its inversions are clearly identifiable within the sequence.

Svoje znanje lahko utrjuješ tudi z MG 6: KVIZ na strani 55-57 in v Domačih nalogah str. 75-84. Izpusti stran 85! Naslednji teden sledi preverjanje znanja!

Lp. Alenka Mori

