

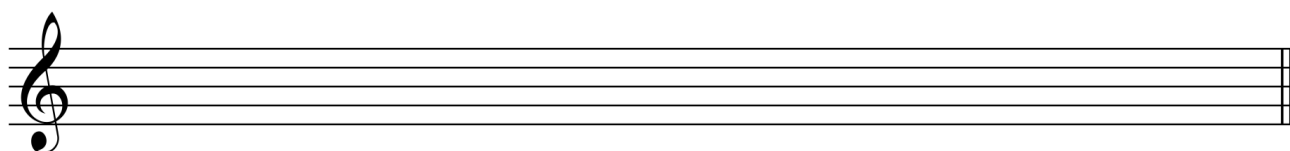
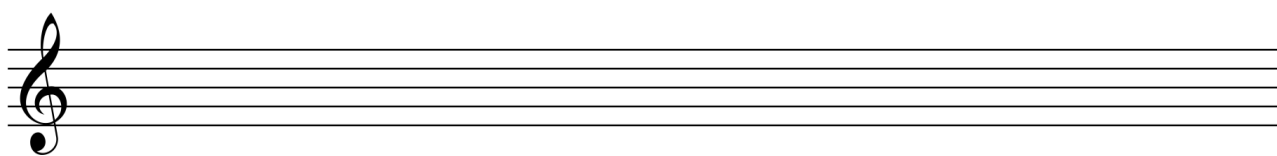
NAVODILO ZA DELO NA DALJAVO – 6. RAZRED NGL, 8. TEDEN

GLASBENA ŠOLA RAVNE NA KOROŠKEM

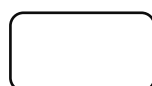
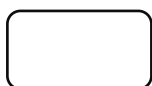
DATUM: 11. 5. 2020

PONOVIMO

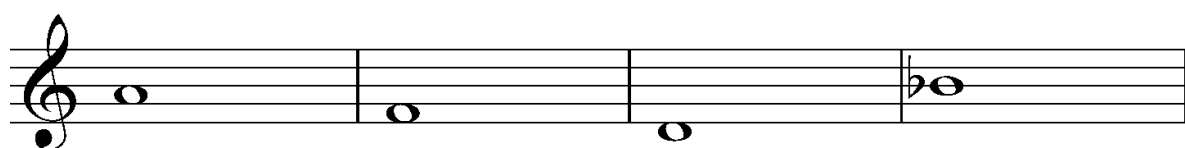
1. Na tonu **es1** napiši kromatično lestvico navzgor in navzdol.



2. Zapiši molovo lestvico.



3. Reši akorde.



zm5/3

m6

d6/4

d5/3

4. Reši intervale.



A musical staff in G major with five intervals. The first interval is a perfect fourth (zv4) from G4 to B4, marked with an upward arrow. The second is a minor third (m3) from B4 to A4, marked with a downward arrow. The third is a chromatic fifth (č5) from A4 to Bb5, marked with an upward arrow. The fourth is a perfect seventh (v7) from B4 to A5, marked with an upward arrow. The fifth is a minor sixth (m6) from A5 to G6, marked with a downward arrow.

5. V melodični vaji označi in poimenuj D7 in njegove obrnitve.



A melodic exercise in G major, 4/4 time. The melody consists of eighth and quarter notes. The D7 chord and its inversions are highlighted in the original image: D7 (D4-G4-A4-F#4), D7/9 (D4-G4-A4-F#4-B4), D7/9#11 (D4-G4-A4-F#4-B4-C#5), D7/9#11(b9) (D4-G4-A4-F#4-B4-C#5-Bb5), D7/9#11(b9)13 (D4-G4-A4-F#4-B4-C#5-Bb5-D6), and D7/9#11(b9)13(b7) (D4-G4-A4-F#4-B4-C#5-Bb5-F#5).

Rešene naloge mi pošlji v pregled na moj e-mail ela.skarlovnik@gmail.com

ŽELIM TI USPEŠNO DELO IN TE LEPO
POZDRAVLJAM.
UČITELJICA ELA SKARLOVNIK

