

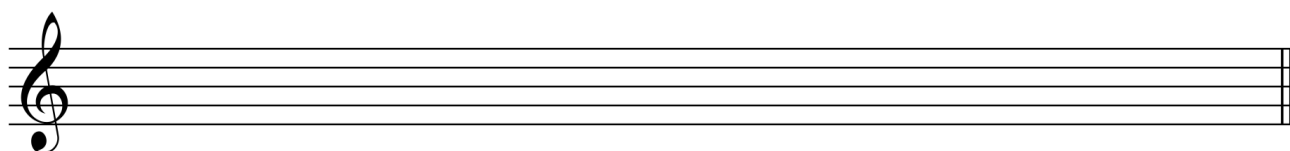
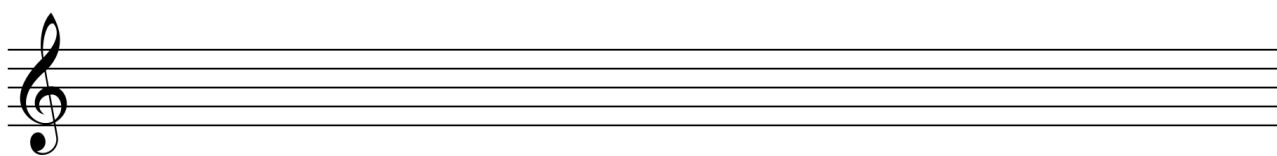
NAVODILO ZA DELO NA DALJAVO – 6. RAZRED NGL, 8. TEDEN

GLASBENA ŠOLA RAVNE NA KOROŠKEM

DATUM: 11. 5. 2020

PONOVIMO

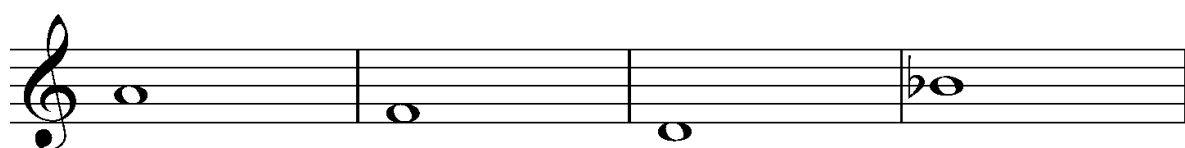
1. Na tonu **es1** napiši kromatično lestvico navzgor in navzdol.



2. Zapiši molovo lestvico.



3. Reši akorde.



zm5/3

m6

d6/4

d5/3

4. Reši intervale.



A musical staff in treble clef with a key signature of one flat (Bb). It contains five measures, each with a single note. Below each measure is a label and an arrow indicating the interval:

- Measure 1: Note Bb, label "zv4" with an upward arrow.
- Measure 2: Note G, label "m3" with a downward arrow.
- Measure 3: Note F, label "č5" with an upward arrow.
- Measure 4: Note E, label "v7" with an upward arrow.
- Measure 5: Note D, label "m6" with a downward arrow.

5. V melodični vaji označi in poimenuj D7 in njegove obrnitve.



A melodic exercise in 4/4 time, key of D major. The melody consists of eighth and quarter notes, with a final quarter rest. The notes are: D4, E4, F#4, G4, A4, B4, C#5, D5, C#5, B4, A4, G4, F#4, E4, D4.

Rešene naloge mi pošlji v pregled na moj e-mail ela.skarlovnik@gmail.com

ŽELIM TI USPEŠNO DELO IN TE LEPO
POZDRAVLJAM.
UČITELJICA ELA SKARLOVNIK

