

GLASBENA ŠOLA RAVNE NA KOROŠKEM

NAUK O GLASBI - 2. RAZRED

DATUM: \_\_\_\_\_



## PREVERJANJE ZNANJA

1. Tonom zapiši imena.

A musical staff in G major with a treble clef and one sharp (F#). It contains eight whole notes. Above the staff, the first four notes are labeled with 'b' and 'e' (B and E), and the last two notes are labeled with 'b' and 'e' (B and E). Below the staff are eight empty rectangular boxes for writing the names of the notes.

□ □ □ □ □ □ □ □

2. Dopolni ritmično vajo z notami in pavzami.

A rhythmic exercise staff in 4/4 time. It starts with a half note, followed by an empty box, then a quarter note, a half note, and a quarter note. This is followed by a bar with a half note, an empty box, a quarter note, and two eighth notes. The next bar has an empty box, a quarter note, and two eighth notes. The final bar has a quarter note, a half note, and an empty box.

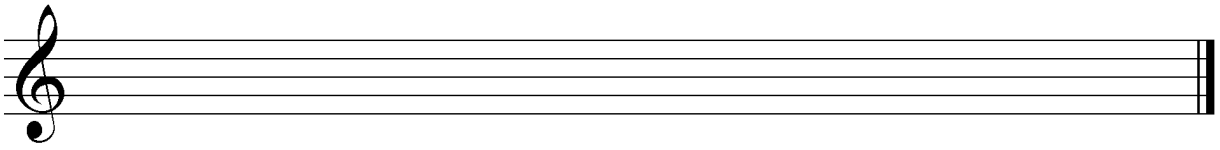
□ □ □ □ □ □ □ □ □ □ □ □ □ □ □ □

3. Določi razdalje med toni (1, 1/2).

A musical staff in G major with a treble clef and one sharp (F#). It contains five notes: G, A, B, A, G. Below the staff are four empty rectangular boxes for writing the intervals between these notes.

□ □ □ □

4. Napiši G-dur. Označi stopnje (rimske številke, glavne stopnje), razdalje med toni, tetrakorda in predznak.



## 5. Poveži.

crescendo

srednje glasno

pianissimo

zmerno počasi

andante

postopoma glasneje

ritardando

hitro

mezzoforte

zelo tiho

allegro

postopoma počasneje

