

# NAVODILO ZA DELO NA DALJAVO – 5. RAZRED NGL, 9. TEDEN

## GLASBENA ŠOLA RAVNE NA KOROŠKEM

DATUM: 18. 5. – 22. 5. 2020

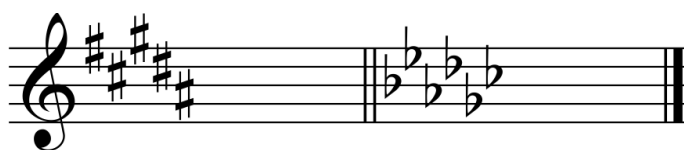
Dragi učenec, draga učenka.

Danes boš preveril(a) svoje znanje. Ne pozabi na pisno ocenjevanje znanja, ki bo potekalo naslednji teden.



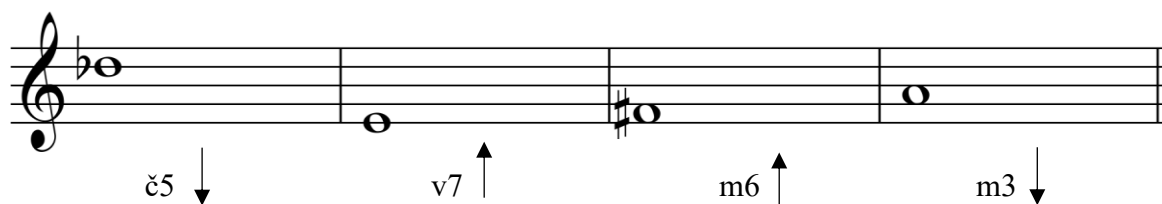
### PREVERJANJE ZNANJA

1. Po predznakih ugotovi durovo in vzporedno molovo lestvico.

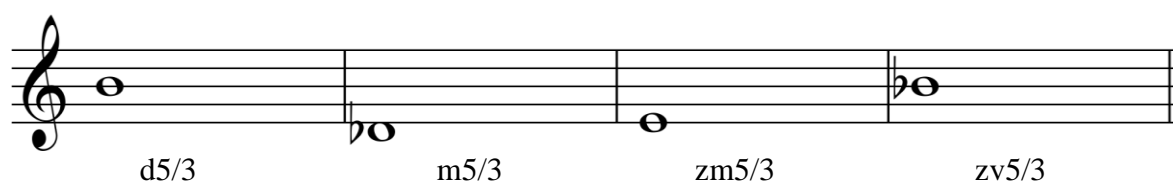


\_\_\_\_ / \_\_\_\_      \_\_\_\_ / \_\_\_\_

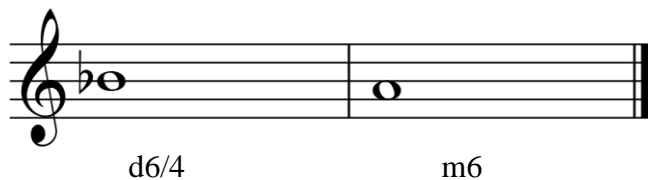
2. Zapiši intervale.



3. Reši kvintakorde.

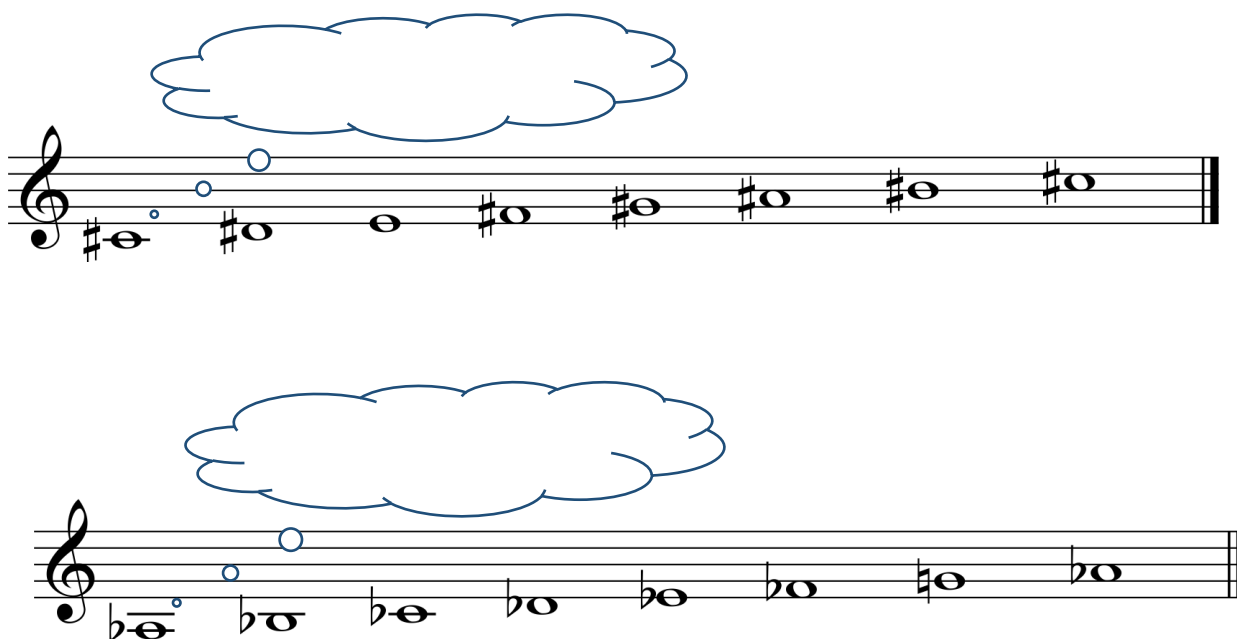


4. Reši obrnitvi kvintakordov.



A musical staff in treble clef with a key signature of one flat (B-flat). The first measure contains a chord with notes D4, F4, and A4. The second measure contains a chord with notes G4, B4, and D5. Below the staff, the labels 'd6/4' and 'm6' are positioned under the first and second measures respectively.

5. Ugotovi molovo lestvico ter njeno obliko (npr. melodični a-mol).



Two musical staves in treble clef. The first staff shows a scale starting on G4 with notes G4, A4, B4, C5, D5, E5, F5, G5. The second staff shows a scale starting on G4 with notes G4, F4, E4, D4, C4, B3, A3, G3. Above each staff is a blue cloud-shaped thought bubble.



Tudi v tem tednu ti želim veliko uspeha pri reševanju nalog. Rešene naloge mi pošlji v pregled na moj e-mail ([ela.skarlovnik@gmail.com](mailto:ela.skarlovnik@gmail.com)).

Lepo te pozdravljam.

Ela Skarlovnik

